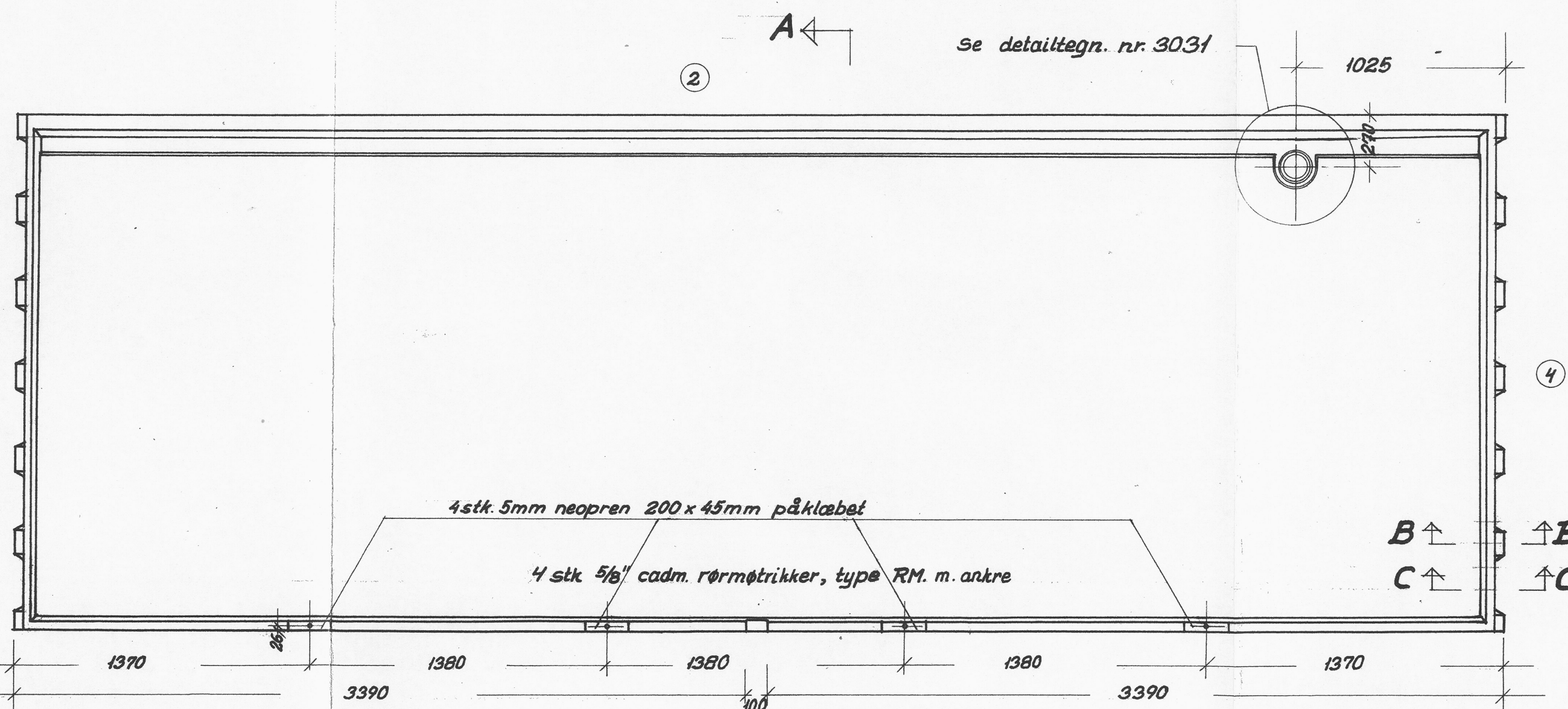
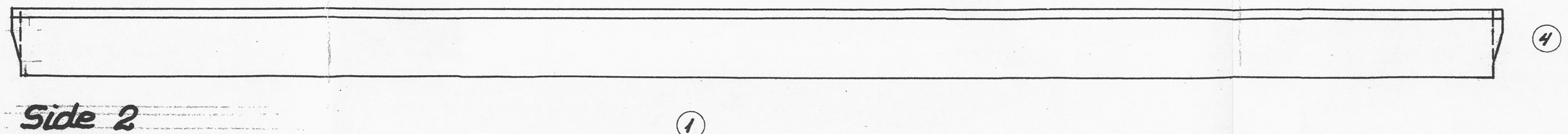


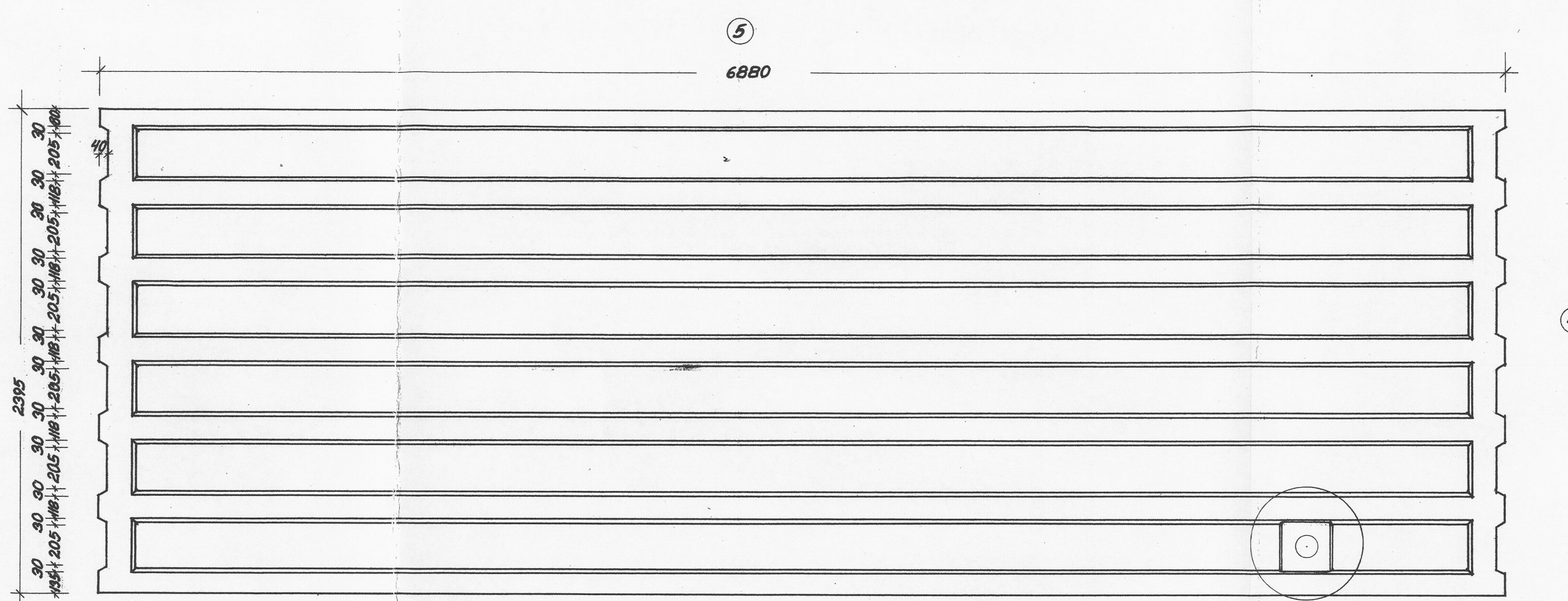
Side 5



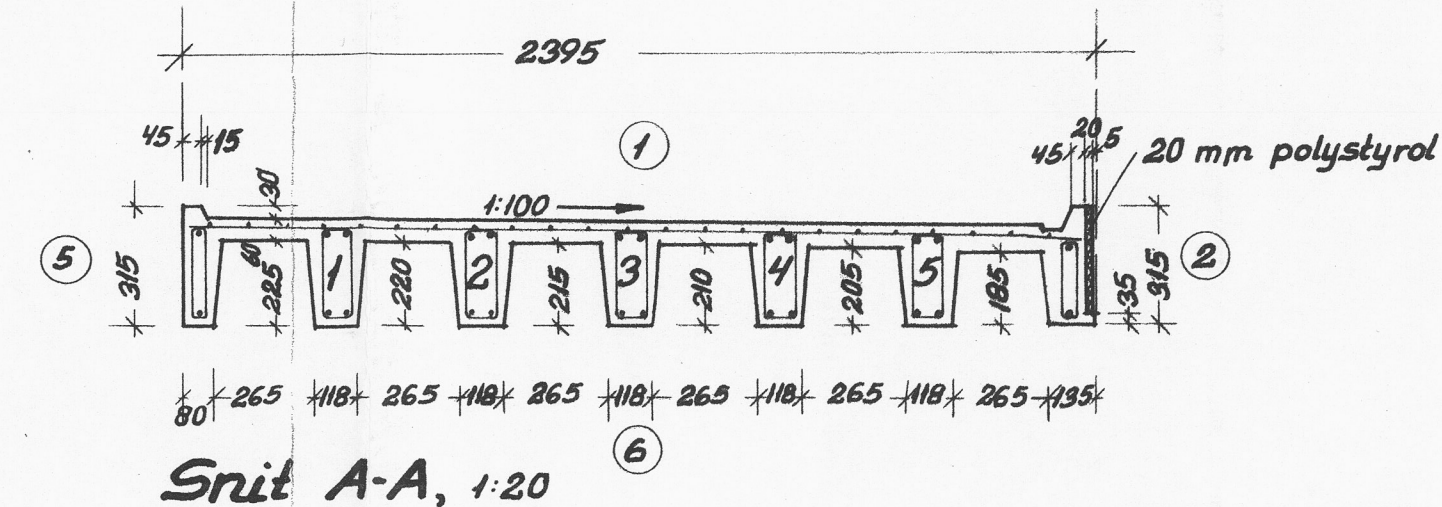
Side 1



Side 2

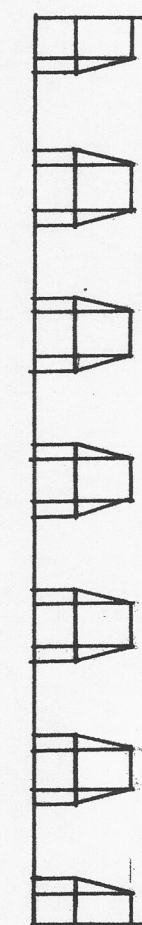


Side 6

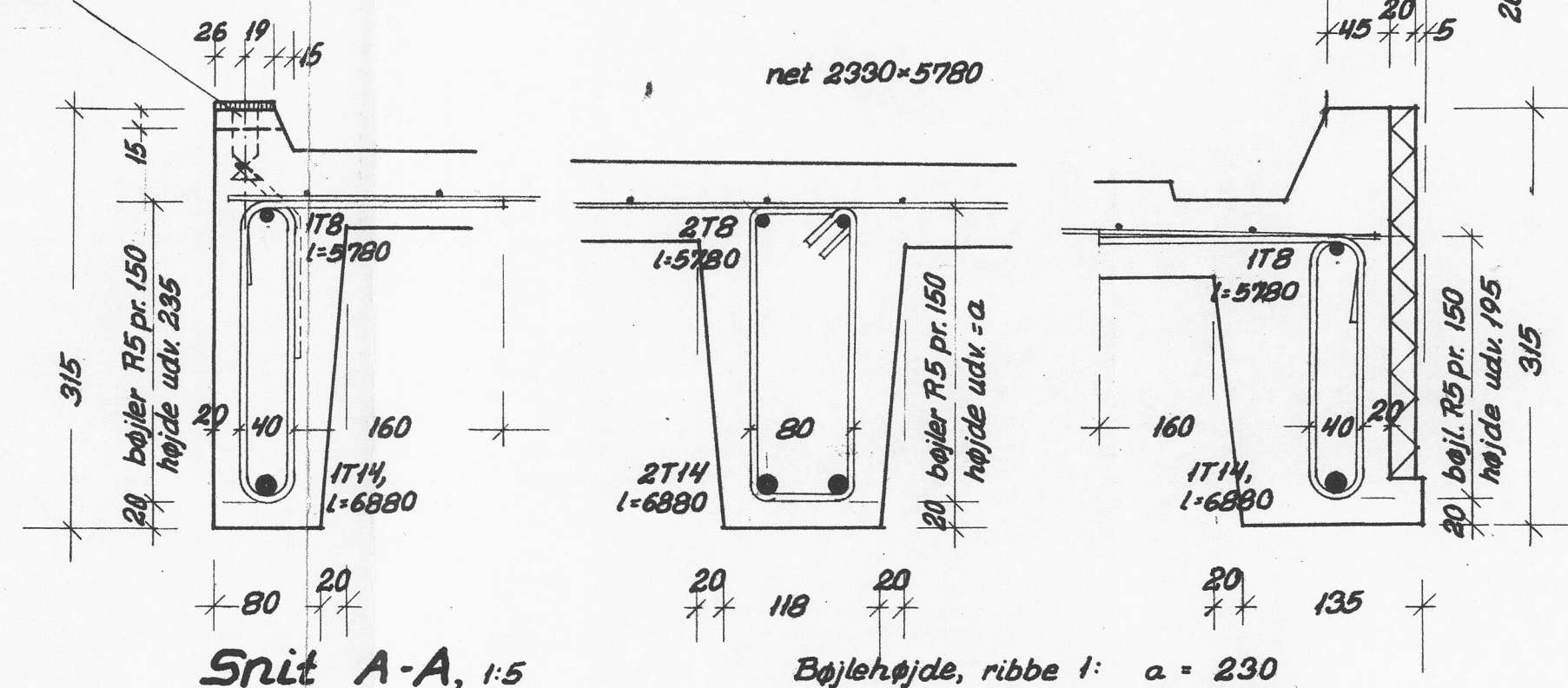


Snit A-A, 1:20

4 stk 5/8" cadm. C.G. rørmøtrik, type RM med ankre



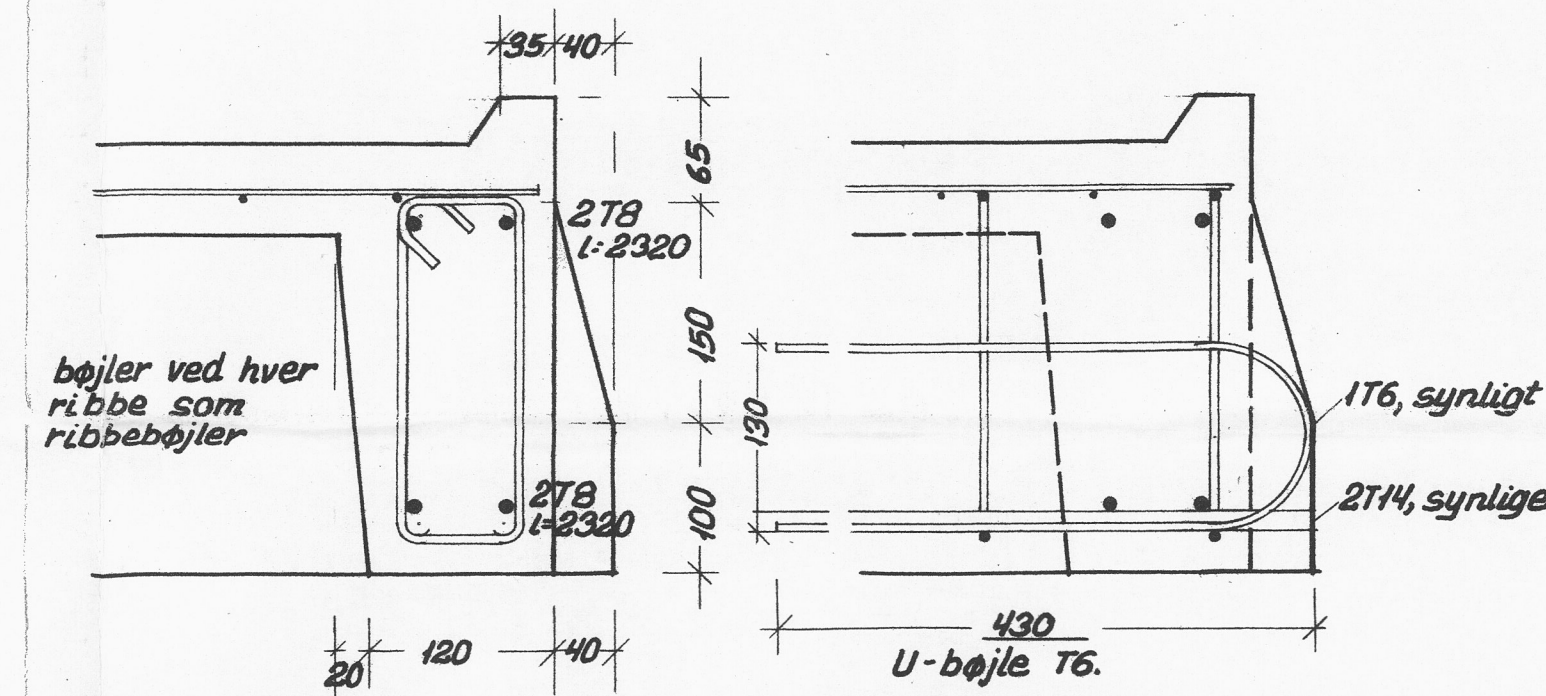
Side 3



Snit A-A, 1:5

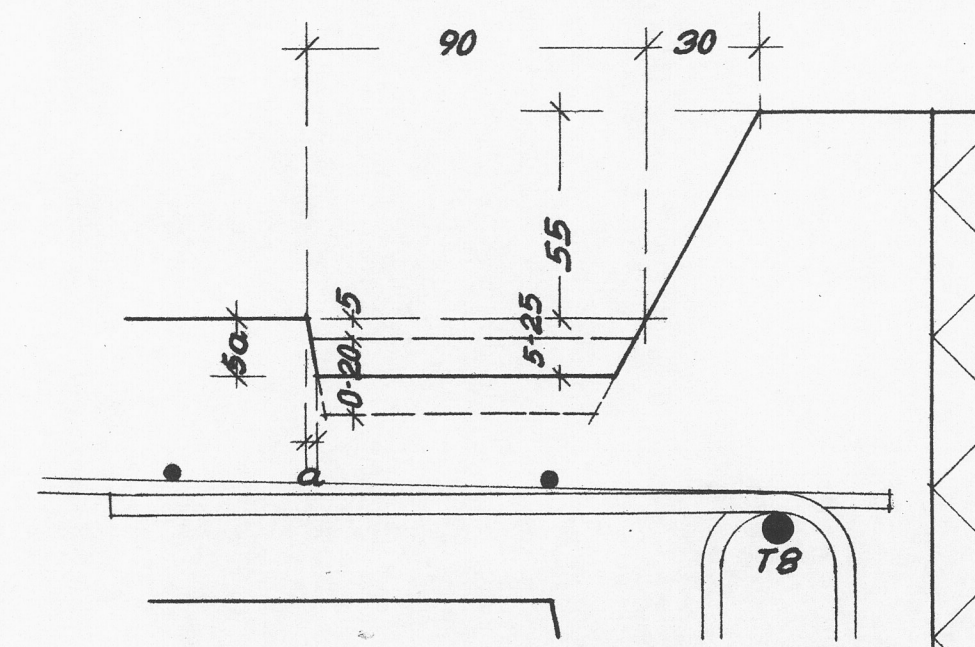
Bøjlehøjde, ribbe 1:

a = 230
2: a = 225
3: a = 220
4: a = 215
5: a = 210



Snit C-C, 1:5

Snit B-B, 1:5



Detail af rende, 1:2

Alle mål er mm.
 Elementantal 120 stk.
 Elementvægt 5700 kg.
 Betonterringsbrudstyrke $\geq 240 \text{ kg/cm}^2$
 R = alm. rundjern (St 37).
 T = tentorstål.
 Armeringsnet: R 4,2 pr. 100 i bg. retn. (St 52).
 Rustfrit stål: AVESEA B32M.
 Løfleinserts efter fabrikantens standard.

SØLLERØD KOMMUNES
 BYGNINGSINSPEKTORAT
 J. NR. 13290
 MODT. 16. MAR. 1971
 HØRES TIL GODKENDELSE
 AF: -4. MAJ 1971

W. J. Jørgensen

BIKUBENS BOLIG FOND, SKODSBORGVEJ

ALTANDA-ELEMENT A1

MAL: F20, F5, F2 DATO: 1.12.70 SIGN.: KONT.: SAG: 1224 TEGN.:
 REV. A: B: C: D: E: F: G: H: J: 3155 C

ARKITEKTER M.A.A. HALLDOR GUNNLOGSSON & JØRN NIELSEN SNAREGADE 12 1205 KBH. K TELF. BY (0128) 5106
 RÅDGIVENDE INGENIØRER B.B. BENDTSÉN A/S SUOMISVEJ 3 1927 KBH. V TELF. (01) 35 10 41
 LANDSKABSARKITEKT OLE NØRGAARDS TEGNESTUE SNAREGADE 12 1205 KBH. K TELF. (01) 12 37 38
 TOTALENTREPRENØR J. SAABY & O. LERCHE A/S HOVEDKONTOR NYROPSSGADE 19 1602 KBH. V TELF. (01) 12 55 50

Pilhøjde 15 mm