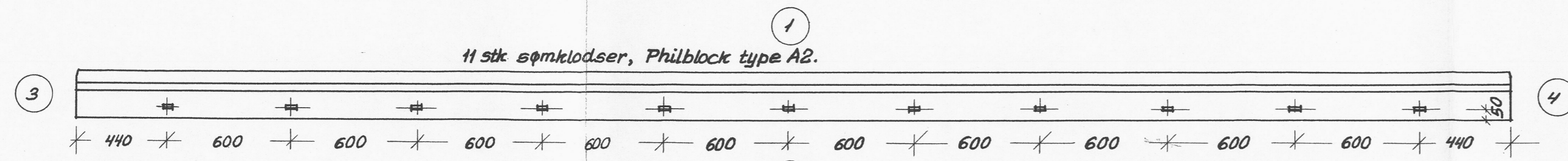
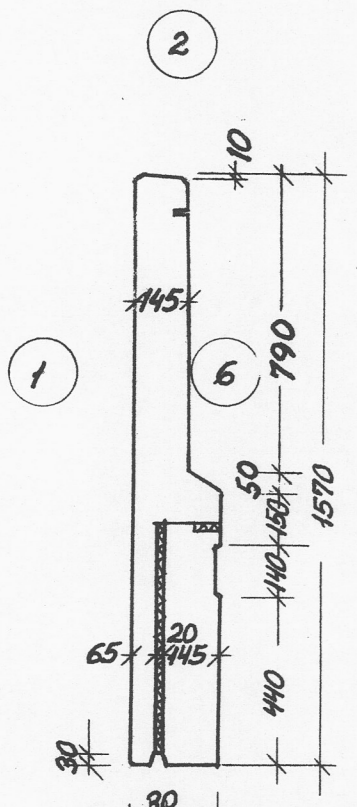


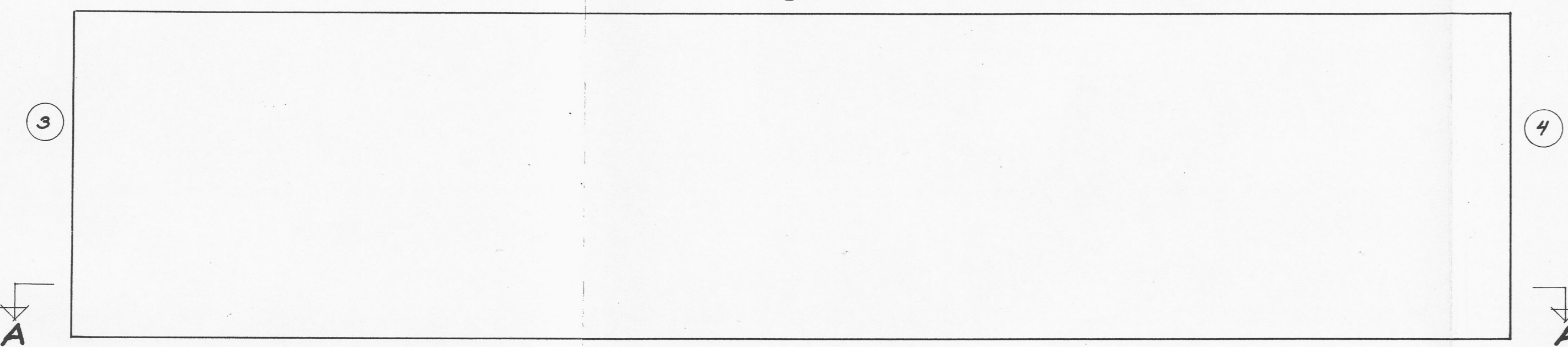
11 stk sømklodser, Philblock type A2.



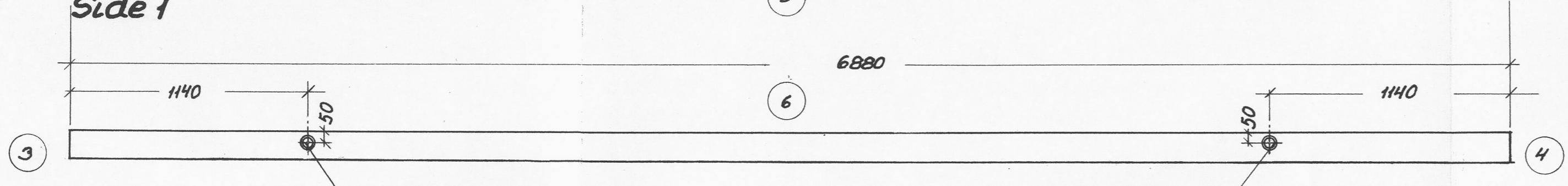
Side 5



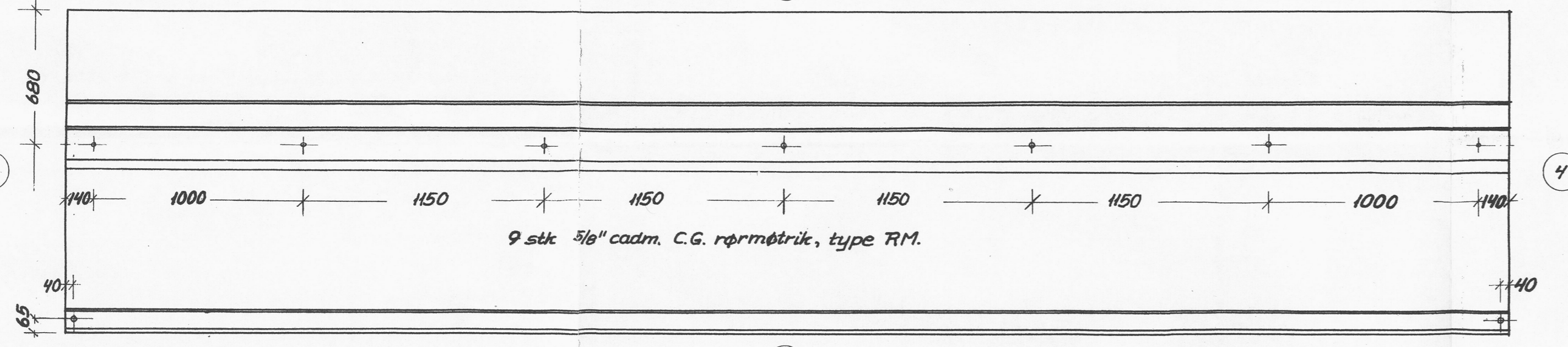
Side 4



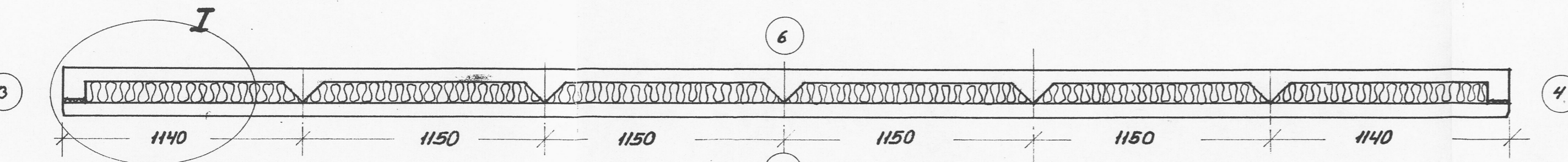
Side 1



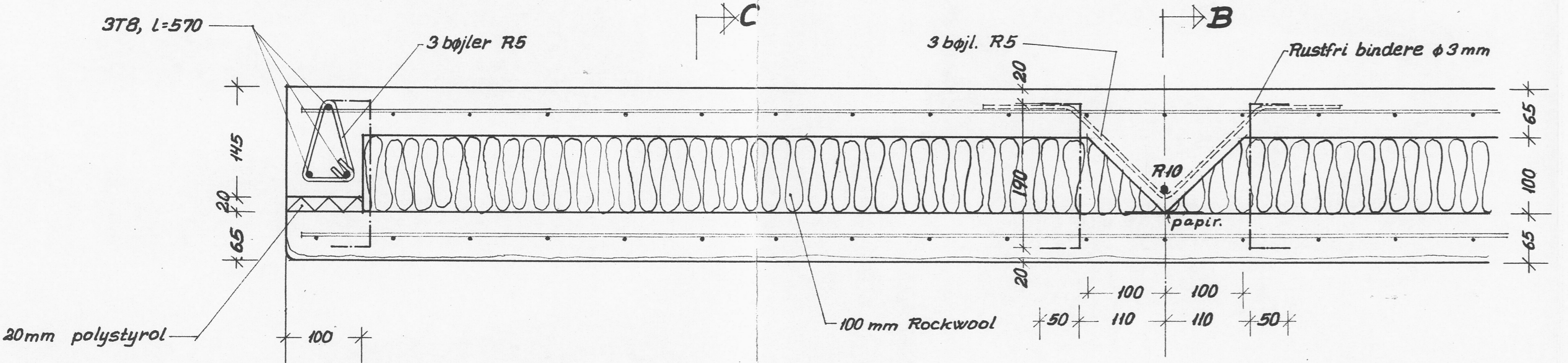
Side 2



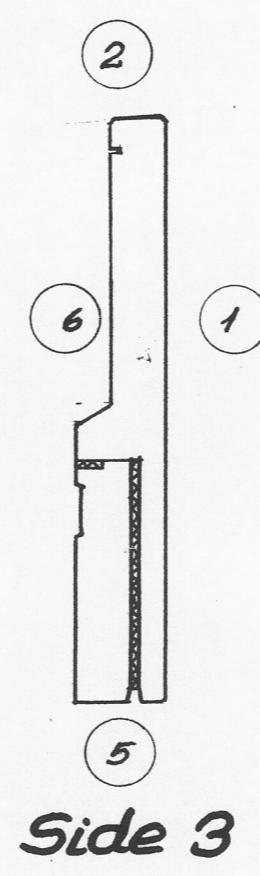
Side 6



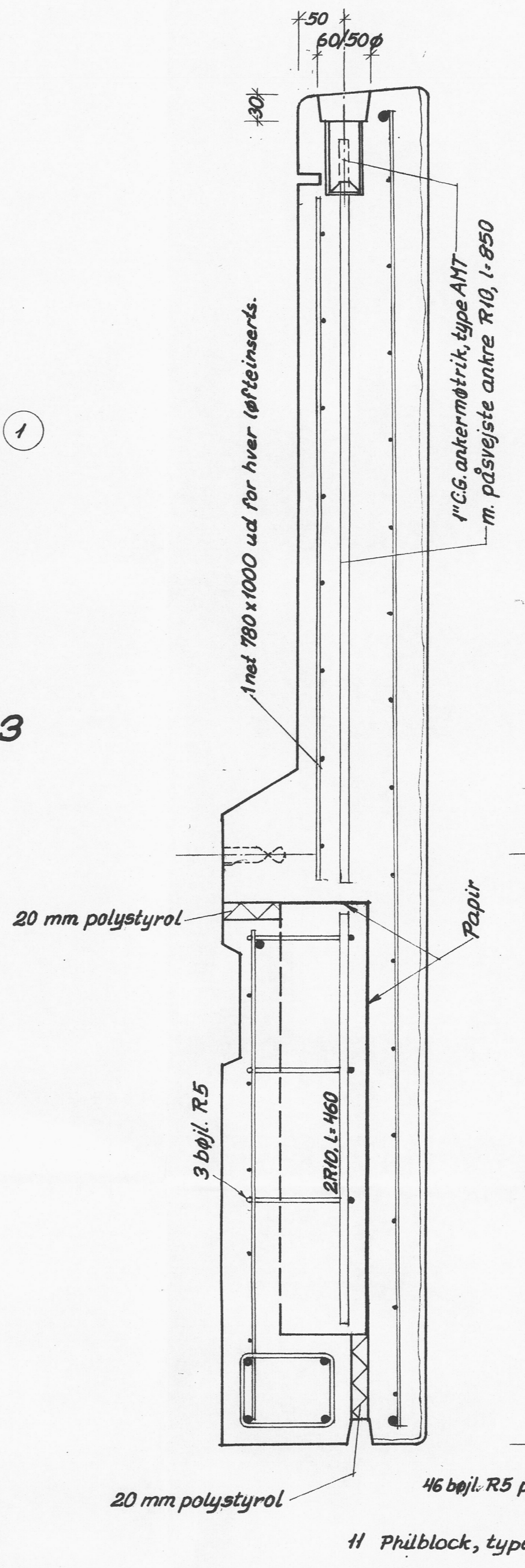
Snit A-A



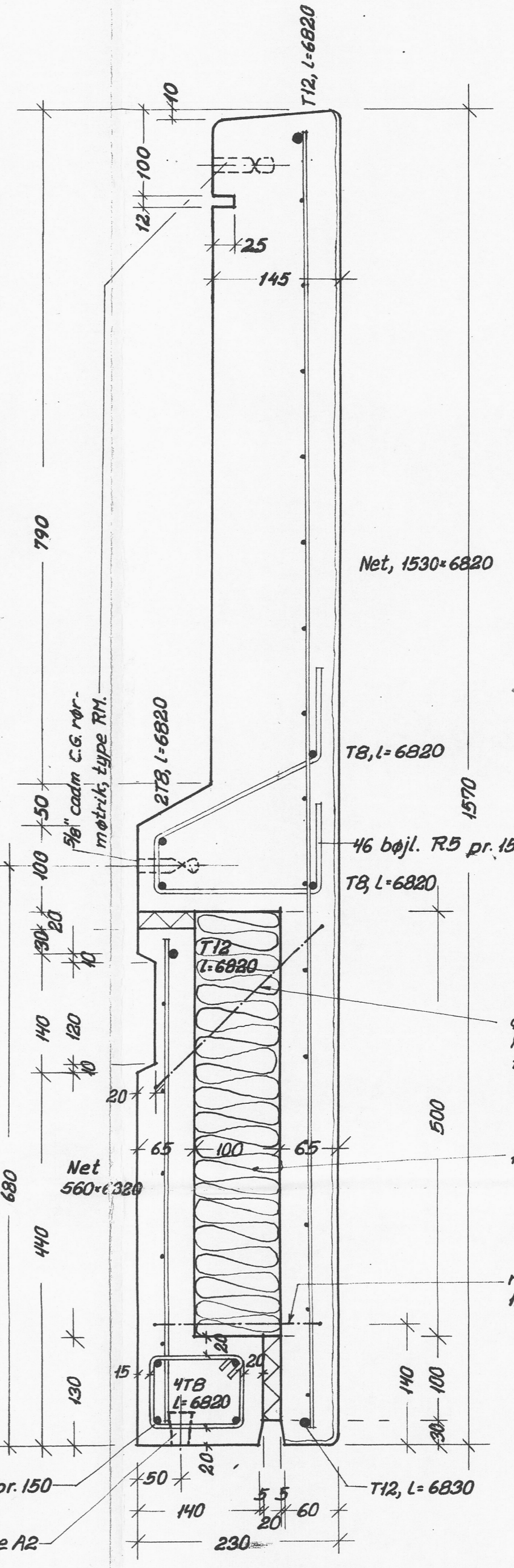
Detail I



Side 3



Snit B-B, 1:5



Snit C-C, 1:5

Forstøbning med hvid cement, tilslagsmaterialer rød granit 5/8 mm, let afsyring.

Alle mål er mm.  
 Elementantal 36 stk.  
 Elementvægt 4080 kg.  
 Betoneringsstyrke  $3 \frac{3}{8} \approx 300 \text{ kg/cm}^2$   
 R = alm. rundjern (St. 37)  
 T = Tentorstål.  
 Armeringsnet R 4,2 pr. 100 i bg. retr. (St. 52).  
 Rustfrit stål AVESTA 832M.

SOLLERØD KOMMUNES  
 BYGNINGSINSPEKTORAT  
 J. NR. 124/70  
 MCDT. 16 MAR. 1971  
 HØJTER TIL GODKENDELSE  
 AF: 4. MAJ 1971

*Handwritten signature*

BIKUBENS BOLIG FOND, SKODSBORGVEJ PARCEL AF MATR. NR. 56 SOLLERØD

**FACADEELEMENT F10**

MÅL: 1:20, 1:5	DATO: 1.12.70	SIGN.:	KONT.:	SAG: 1284	TEGN.:
REV. A:	B:	C:	D:	E:	F:
DATO: 15.12.70	23.1.71	4.3.71			

- ARKITEKTER M.A.A. HALLDOR GUNNLOGSSON & JØRN NIELSEN, SNAREGADE 12 1205 KBH. K. TELF. BY (0128) 5106
- RÅDGIVENDE INGENIØRER B.B. BENDTSEN A/S, SUOMISVEJ 3 1927 KBH. V. TELF. (01) 35 10 41
- LANDSKABSARKITEKT OLE NØRGÅRDS TEGNESTUE, SNAREGADE 12 1205 KBH. K. TELF. (01) 12 37 38
- TOTALENTREPRENØR J.SAABYE & O. LERCHE A/S, HOVEDKONTOR NYROPSCADE 19 1802 KBH. V. TELF. (01) 12 55 50